

## Quarantine



### Purpose of quarantine

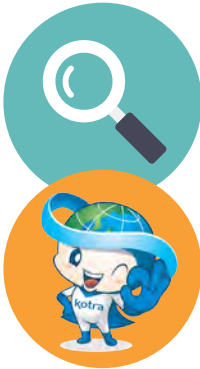
The advent of new infectious diseases like SARS, MERS and avian flu and the reemergence of old ones are posing a threat to global health. Also, the continuous increase in trade volume and cross-border travel is adding to the risk of transmission of infectious diseases to other countries. To prevent infectious diseases from spreading into or out of the country, Korea has in place quarantine procedures and preventative measures for passengers and cargo on board vessels, aircrafts, trains and automobiles.

### Quarantine declaration

- Quarantine guide
  - At the quarantine office, quarantine certificates are issued for overseas travelers, animals, and plants.
  - Travelers should check whether their destination country requires a quarantine certificate.

# Quarantine of Travelers

## Vaccination



Check with each country's vaccination requirements for yellow fever, cholera, malaria and other major infectious diseases.

- **Vaccination and certificates**

- Incheon Airport National Quarantine Station (2106C) is located at the center of the terminal, next to the Millennium Hall in Area 5 on the 2nd floor. Vaccinations and certificates are available here.
- Open weekdays (Mon.-Fri. 09:00-18:00); phone reservations are available.

- **Vaccination fee & certificate issuance fee**

- Yellow fever: 28,600 won, Cholera: 25,300 won (2 visits required), Certificate issuance: 1,000 won

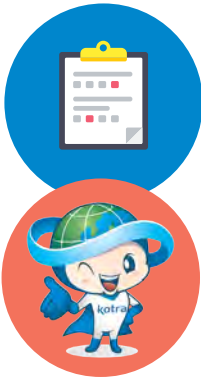
- **Website and contact information**

- Quarantine for Travelers: [travelinfo.cdc.go.kr/travelinfo](http://travelinfo.cdc.go.kr/travelinfo)
- Incheon Airport National Quarantine Station (reservation for vaccination): 82-32-740-2703
- Quarantine Help Desk: 82-32-740-2700/2706



# Animal and Plant Quarantine

## Import quarantine



### 1 Animal Quarantine (Dogs, Cats and Other Traveling Pets)

- Persons entering with companion animals must go through animal quarantine at the CIQ at Incheon International Airport (by the Luggage Claim).
- Incheon International Airport Animal Quarantine Office
  - Inside the airport's CIQ, near baggage claim carousel number 5, 8, 15, 19
- Required documents: Animal quarantine certificate issued by the exporting country's authorities

### 2 Information Required on the Animal Quarantine Certificate

- ① Microchip implant number: Importers of animals bearing microchips that are not ISO11784/11785 compliant should prepare the appropriate microchip reader.
- ② Test result on neutralizing antibody test to rabies (within 24 months of the sampling date, result should be 0.5 IU/ml or higher), test date, name of testing laboratory
  - ※Animals younger than 90 days and animals from a rabies free country do not require a test result on neutralizing antibody test to rabies.
- ③ Certification of no history of Hendra virus and Nipah virus infection (for Malaysian cats and dogs and Australian cats)
- ④ Date of birth, quarantine certificate issuance number, government stamp of approval by exporting country, signature of veterinarian, etc.
  - ※Check the precise details at the time of entry as the above information is subject to change.
  - ※This is in accordance with OIE (World Organization for Animal Health) recommendations and is subject to change depending on animal disease outbreaks in the originating country.
  - ※Quarantined animals that pass the inspection test will be released on the day of quarantine, but the quarantine period will be extended for animals that do not pass the inspection, and the animal's caretaker shall pay any additional costs incurred.

### 3 Quarantine of Livestock Products and Plants

- If a traveler is in possession of any plants (fruits, flowers, etc.) or livestock products (sausages, dried meat, processed meat, dairy products, or egg products), he / she must be inspected at a quarantine station.
- Most fruits, fruit vegetables, root vegetables with soil attached, meat, ham, sausages, dried meat, etc. are restricted.

## Export quarantine



### 1 Animal Quarantine

- If the destination country requests an animal quarantine certificate from Korea, the animal owner must receive quarantine from the Animal and Plant Quarantine Agency and carry the animal quarantine certificate when leaving the country with the companion animal.
  - Export quarantine applicants must check the quarantine requirements of the destination country through the country's animal quarantine agency, embassy in Korea, etc.
- As the import of certain types of companion animals is banned in some countries, applicants must check the relevant information in advance.
- Quarantine service at Incheon International Airport
  - Animal and plant quarantine center (Inside entrance 7 on the 3rd floor of the airport terminal)
- Required documents:
  - Certificate of rabies vaccination, physical examination report and other documents required by the destination country
  - Business hours  
09:00-18:00 (Weekdays)  
Outside of business hours, call 82-32-740-2660/2661/2671

#### ■ Contact Information

- Animal export quarantine: 82-32-740-2660/2661
- Quarantine for an extended period: 82-32-752-1271/1272
- Animals shipped by cargo: 82-32-740-2678



## 2 Quarantine of Livestock Products and Plants



- If the destination country requires a livestock products and plants quarantine certificate from Korea, the owner must receive quarantine from the Animal and Plant Quarantine Agency and carry the animal quarantine certificate when leaving the country with the livestock products and plants.
  - Export quarantine applicants must check the quarantine requirements of the destination country through the country's quarantine agency, embassy in Korea, etc.
- As the import of certain types of livestock products and plants is banned in some countries, applicants must check the relevant information in advance.

### ■ Contact Information

- Hand-carried livestock products and plants: 82-32-740-2660/2661
- Hand-carried plants: 82-32-740-2077
- Livestock products shipped by cargo: 82-32-740-2673
- Plants shipped by cargo: 82-32-740-2074
- Livestock products shipped by express cargo: 82-32-740-2627
- Plants shipped by express cargo: 82-32-740-2073
- Livestock products shipped by mail: 82-32-740-2683
- Plants shipped by mail: 82-32-740-2088



## Animal and Plant Quarantine Agency

Information on animal diseases, plant pests and diseases, import and export of animals and plants and quarantine service for overseas travelers.

Web: [www.qia.go.kr](http://www.qia.go.kr)

### ■ Contact Information

Office	Address	Tel
QIA Head Office	175, Aanyang-ro, Manan-gu, Anyang-si, Gyeonggi-do	Animals 82-31-467-1994 Plants 82-31-250-9179
Incheon International Airport Regional Office	Government agency bldg, 47, 424 beon-gil, Gonghang-ro, Jung-gu, Incheon	Animals 82-32-740-2660 Plants 82-32-740-2077
Yeongnam Regional Office	8, Jungang-daero 30beon-gil, Jung-gu, Busan	82-51-600-6250
Jungbu Regional Office	129, Juan-ro, Nam-gu, Incheon	82-32-722-8237
Seoul Regional Office	46, Deungchon-ro 39ga-gil, Gangseo-gu, Seoul	82-2-2650-0617
Honam Regional Office	3F Hongin bldg, 96, Munhwa-ro, Gunsan-si, Jeollabuk-do	82-63-460-9430
Jeju Regional Office	4F Jeju Regional Government Complex, 59, Cheongsu-ro, Jeju-si, Jeju-do	82-64-728-5350

