

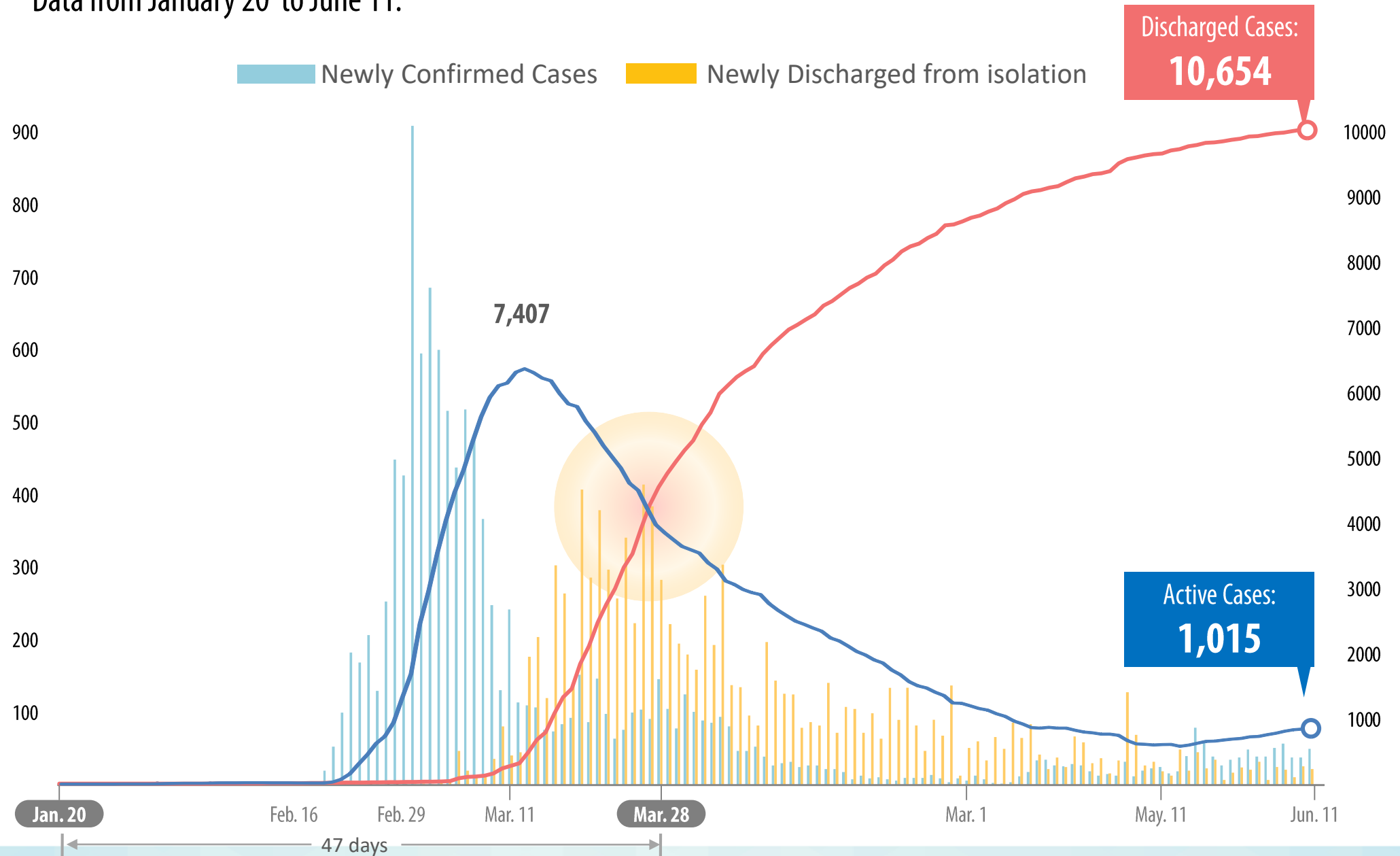
# NATIONAL POLICY ON COVID-19 RESPONSE & CURRENT STATUS



Ministry of Health  
and Welfare

# New confirmed cases and discharged cases

Data from January 20 to June 11.



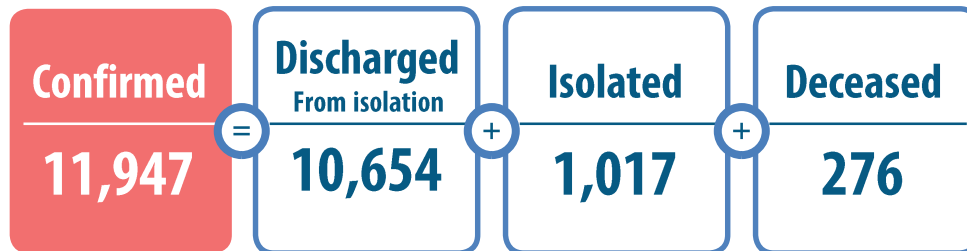
# Confirmed Cases in Korea

Data from January 20 to June 11.

## Confirmed cases

Newly Confirmed **12**

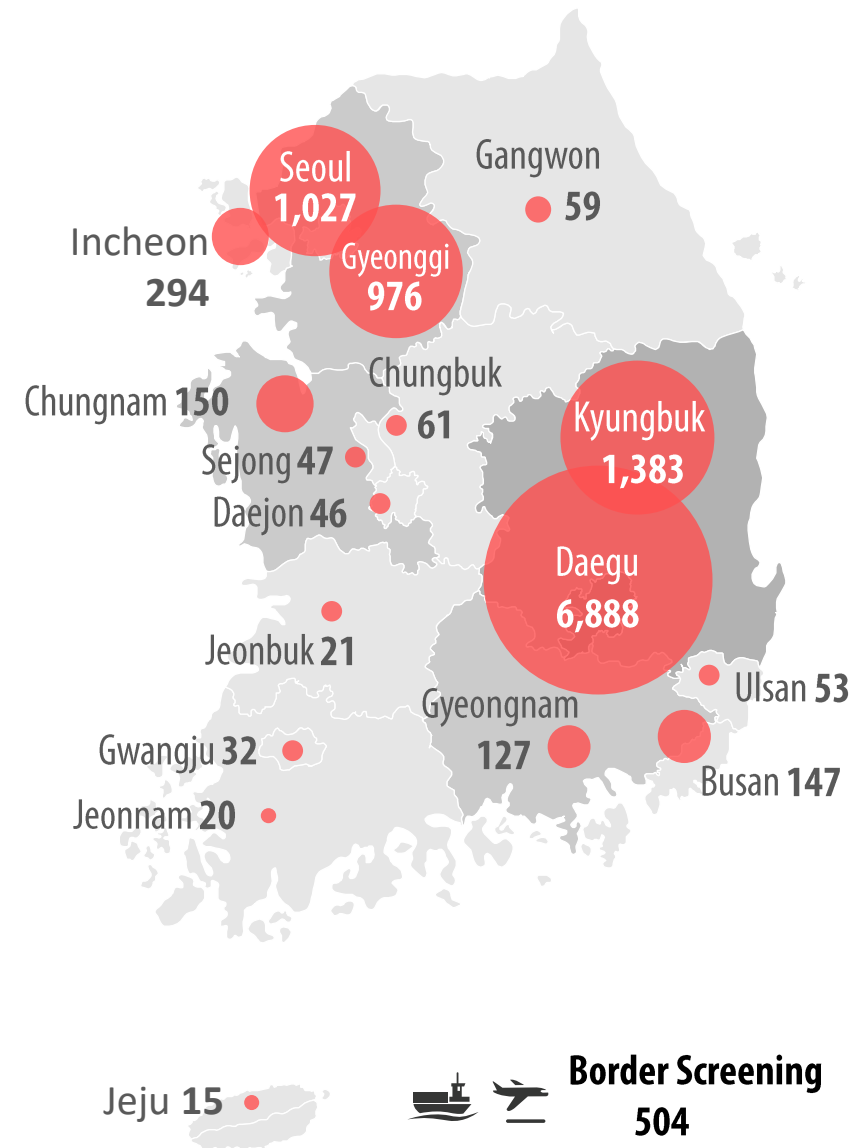
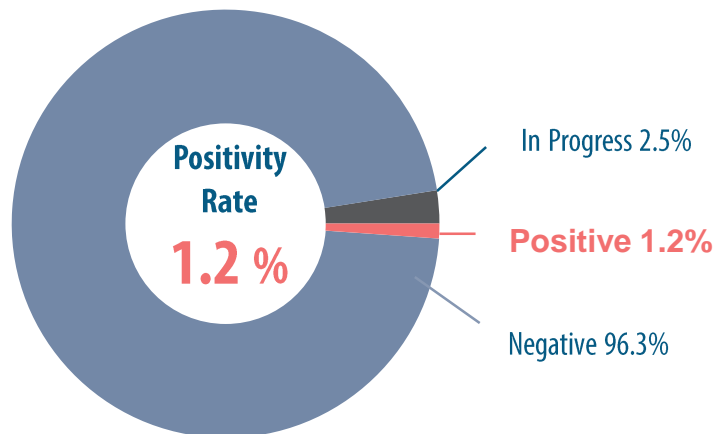
Newly Discharged/released **69**



## Tests

Performed **1,051,972**

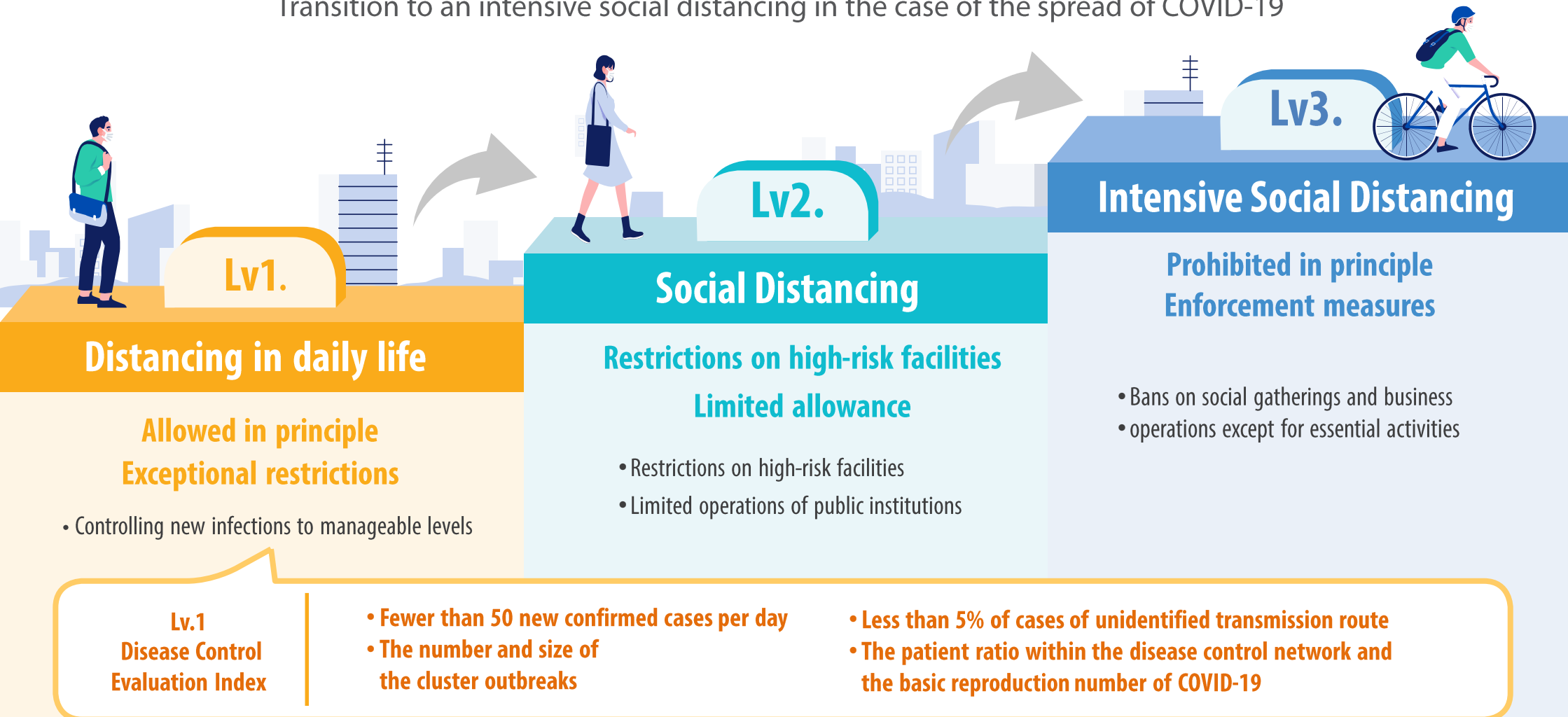
Concluded **1,025,749**



# Distancing in daily life

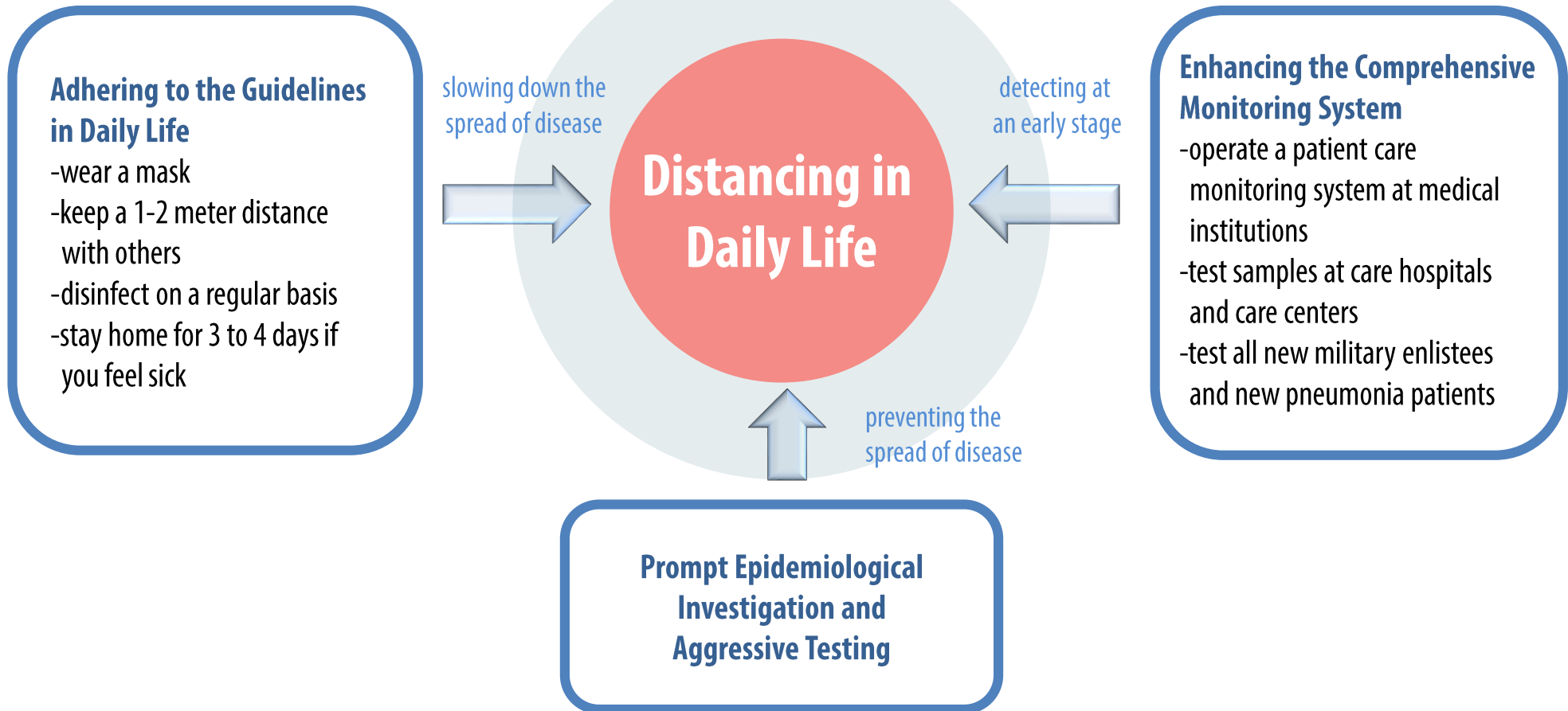
Long-term and sustainable infectious disease control system to enable continuation of social and economic activities, while maintaining COVID-19 prevention and control practices in daily routine.

Transition to an intensive social distancing in the case of the spread of COVID-19



# The Concept of Distancing in Daily Life (Objectives)

- **Concept** : Long-term and sustainable infection control system in “a new routine” that continues social and economic activities, while maintaining COVID-19 prevention and control practices



# Distancing in Daily Life\_ (1) Devising Basic Guidelines

## (1) Basic Rules

## Guidelines for Distancing in daily life

**Recommendations for Individuals/Community** (But some high-risk facilities are being monitored by the local governments)

### Individuals

- Basic Rules
- Supplementary Rules

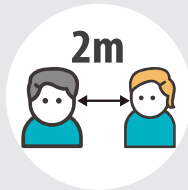
### Community

- Basic Rules
- 31 detailed guidelines by type

### Five Basic Rules for Individual Infection Prevention



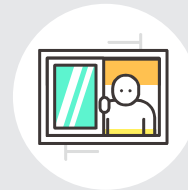
Stay home for 3 to 4 days if you feel sick.



Stay at least 2 arms' length from others.



Wash your hands for 30 seconds and cover your mouth with sleeve when coughing.



Ventilate more than twice a day and frequently disinfect.



Don't forget we are emotionally connected despite physical distance.

### Four Supplementary rules for individual Infection prevention



Wear masks



Ventilate and disinfect



Follow daily guidance for the elderly



Keep healthy daily habits

# Distancing in Daily Life\_\_ (1) Devising Basic Guidelines

## (2) Rules for high-risk facilities

- **Facility Risk Assessment based on Six Indexes:**

Closeness : the level of closeness of space

Density : the level of density between users

Crowdedness : the number of users

Activeness : the possibility of droplet generation

Duration : the length of user stay

Manageability : the level of guideline compliance

- **Designation of high-risk facilities based on risk assessment**

- business owners and users must adhere to the mandatory infection prevention and control guidelines

\*manage the list of visitors, wear masks, disinfect the facility before and after daily use, and check symptoms of visitors and staff

→ executive measures, such as ban on gathering or a fine, can be taken in case of violation

- Eight types of facilities were designated as “high-risk” as of now

\* karaoke rooms, indoor group workouts, indoor concert halls with standing shows, and other entertainment facilities

# Distancing in Daily Life\_ (2) Reopening of Public Facilities

- A phased reopening of facilities after devising infection prevention and control guidelines based on the risk level of each facility type

## <Relative risk level by the characteristics of each facility type>

**outdoor** activities with  
**dispersed** population

parks, outdoor  
sport facilities

**indoor** activities with  
**dispersed** population

art galleries, museums

**outdoor** activities with  
**dense** population

events, etc.

**indoor** activities with  
**dense** population

concert halls, etc.

**Risk Level**



- **The general election, national examination and school reopening**

- The General Election on April 15

\* Voters were guided to get temperature check, wear a mask and plastic gloves, use a hand sanitizer, and keep a two-arms' length distance with other people

- The Civil Service Exam for Grade 5 public officials on May 16 (taken by 9,600 candidates)

\* Candidates were guided to get temperature check, wear a mask, use a hand sanitizer, and keep at least two-meter distance with other people (15 candidates per exam room)

- phased school reopening

**May 20:** high-school seniors

**May 27:** students in the 2<sup>nd</sup> grade of high school, the 3<sup>rd</sup> grade of middle school and the 1<sup>st</sup> and 2<sup>nd</sup> grades of elementary school, and preschoolers

**June 3:** students in the 1<sup>st</sup> grade of high school, the 2<sup>nd</sup> grade of middle school, the 3<sup>rd</sup> and 4<sup>th</sup> grades of elementary school

**June 8:** students in the 1<sup>st</sup> grade of middle school and the 5<sup>th</sup> and 6<sup>th</sup> grades of elementary



# The Enhanced Monitoring System

## **(1) Rapid testing and Permanent Monitoring System**

- Pooled Testing: increase time efficiency
- Testing by Medical Institutions: test all cases with suspicious symptoms, among new pneumonia patients, patients in intensive care, and visitors of emergency room
- Sentinel Surveillance System: collect clinical data and specimen of severe cases of COVID-19 by adding COVID-19 test to the surveillance system of SARS (Severe Acute Respiratory Syndrome)

## **(2) Testing at High-Risk Facilities**

- Care Hospitals and Care Centers: test patients with flu-like symptoms, such as fever
- Mental Hospitals: test new patients before admission

## **(3) Monitoring of Random Population Groups**

- test all new military enlistees
- carry out self-health checks for students before going to school and temperature checks at school entrances

# Rapid and Aggressive Epidemiological Investigation

- **Principle**

In case of a cluster outbreak, test all people with any possibility of contact with confirmed cases.

- **Epidemiological Investigation**

In case of a confirmed case being found, conduct a rapid epidemiological investigation; and detect, test, and quarantine the contacts based on the ICT infrastructure.

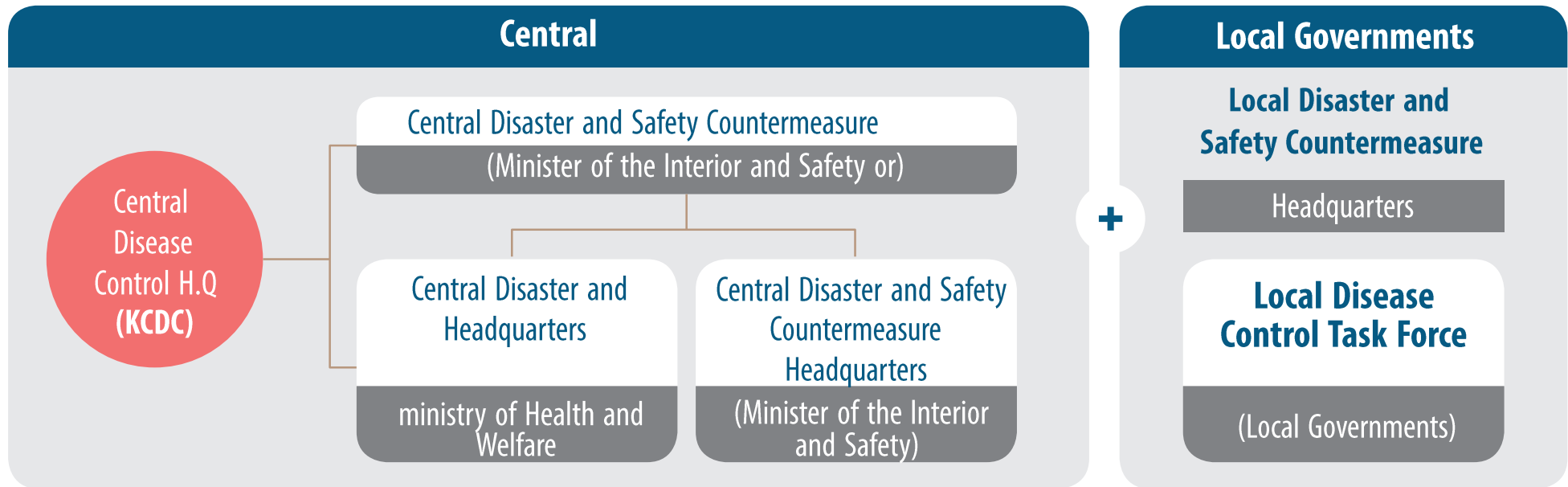
\* operate an integrated information system including surveillance cameras, credit card transaction checks, location tracking, etc.

\* manage QR code-based entry logs for all visitors at multiuse facilities

- **Testing**

Test all people at facilities with high risks, such as care hospitals

# Public Health Response - Governance



- **Cooperation** among the Central Government and Local Governments



- **Risk communication, campaign, and disclosure of information** in a prompt and transparent manner; provision of counseling for the public via **1339** and **public health centers**



- **Reinforcement of government measures** such as the adherence to the code of conduct

# Thank You!



Ministry of Health  
and Welfare